

SHRI SAKTHIKAILASSH



WOMEN'S COLLEGE



AUTONOMOUS

INSTITUTIONAL DISTINCTIVENESS



WOMEN EMPOWERMENT THROUGH SKILL DEVELOPMENT

The institute aims to promote Skills beyond curriculum to mould the students to be complete women in 360 angle through Quality Enhancement System (QES). It is a process of augmentation or improvement of learners attributes, knowledge, skills & potential. It improves the educational quality through cycle of continuous progress and innovation. The college imparts in-depth knowledge and understanding to mould the students to excel in their career.



The main focus of Quality Enhancement System are as follows

- ✓ To incorporate the skills required for the industry.
- ✓ To promote self employment opportunities.
- ✓ To equip rural girl student for new career opportunities for their social upliftment.
- ✓ To buildup better engagement of social partners and industry connect
- ✓ To create a strong public-private partnership in skill development.
- ✓ To build leadership qualities and confidence through hands-on-training.



SKILL ACQUISITION



Skill acquisition is essential for Women Empowerment. Educating and equipping the women with necessary skills can help to reduce gender disparities and achieve gender equality. It also plays a vital role in promoting women's participation in decision making process at various levels and helps them to gain economic independence, Self reliant and enhance their personal and professional growth.

The QES comprises



**Student Performance
Indicators (SPI)**



Special labs



Skill Development Courses

Student Performance Indicators (SPI)

SPI is an internal formulated system focuses on curricular and beyond curricular aspects. It is a holistic development of the students and encourages them to participate in Inter, Intra, State, National Level competitions to acquire academic and professional competencies. It also develops their critical thinking and participation to enrich their communication skills and leadership qualities. Scores will be given for participation and presentation based on the performance and the active involvement of the students. Every month based on the performance and active involvement of the student's, scores will be given for participation and top performers were appreciated. The Best Performing Department and Best Top 10 Performers of the year will be appreciated by the management in Achievers' Day which motivates the students to participate in more activities.



Student Performance Indicators (SPI)

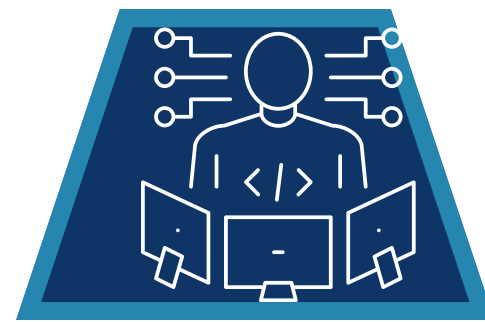
To mould the students to be versatile in acquiring skills, 12 indicators are framed to assess the performance of the students. The lists of indicator are



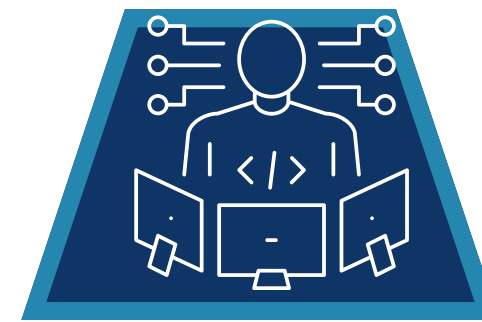
Internal paper presentation



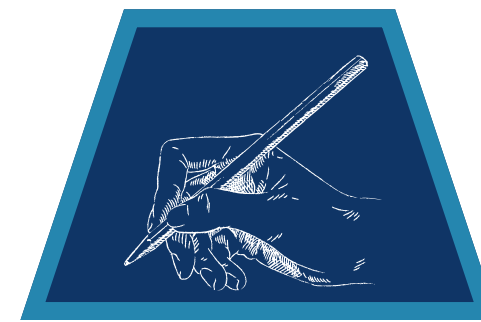
External paper presentation



Internal Technical Event



External Technical Event



Non Technical Event



Workshop / Guest Lecture / Seminar



Event Management



Online / Certificate Course



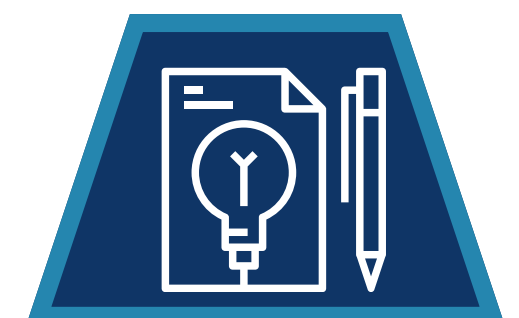
Internship



Library Usage



Communication Skill



Student Project

Special Labs



Special Laboratories enable students to gain, practice, and explore skills that are not included in their curriculum and to impart intense knowledge to meet the industry needs. In addition to product development, SSWC Special Labs Training provides students with the practical understanding and application of their desired area, equipping them with the necessary competence to excel in their professional life. The training provides great opportunities to get employed at reputed industries around the world and also to be an entrepreneur. Exclusively 16 Special Labs are provided to extend the skills acquired by the students in the form of product development.

Special Labs

Tissue Culture

Students participated in the plant tissue culture and had grown ornament plants and medicinal herbs. The plants were transferred to Herbal Garden for further growth.



Azolla Cultivation

Students had an intense knowledge about Azolla Cultivation and grown weed to use it as animal and poultry feed



Special Labs

Vermicompost

Students learnt about vermicomposting. The students have collected the dry waste within the campus and converted it to compost by using earthworms. The output manure was used in herbal Garden.



Herbal Gardening



Phyllanthus niruri
Talinum fruticosum
Clerodendrum inerme etc.,

Special Labs

Mushroom Cultivation

Students from biotechnology, microbiology and botany learnt about the techniques of mushroom cultivation. They underwent hands on training programme and produced mushroom. The yield was sold through our EDC Cell which promotes them to become a self made individual



Non toxic Beauty Products

The students learnt about the preparation of non toxic beauty products like lipstick, lipbalm, soap and other personal products etc., to give a positive effect on the skin and body, which is safe for people to avoid irritation



Special Labs

Fabtex Lab (Aari Work)

Students learnt the techniques of embroidery and tricks for producing high quality results through hands on practice. It also equips candidates with the knowledge of tools and techniques used in embroidery. On successful completion of the course the students will be able to develop design for Aari embroidery.



Software Development Lab

Upon successful completion of the program the students gain knowledge on information technology principle and practices to real world solutions and also demonstrate effective use of written, verbal and non verbal communication, employing relevant knowledge, skills and judgment in the business setting.



Special Labs

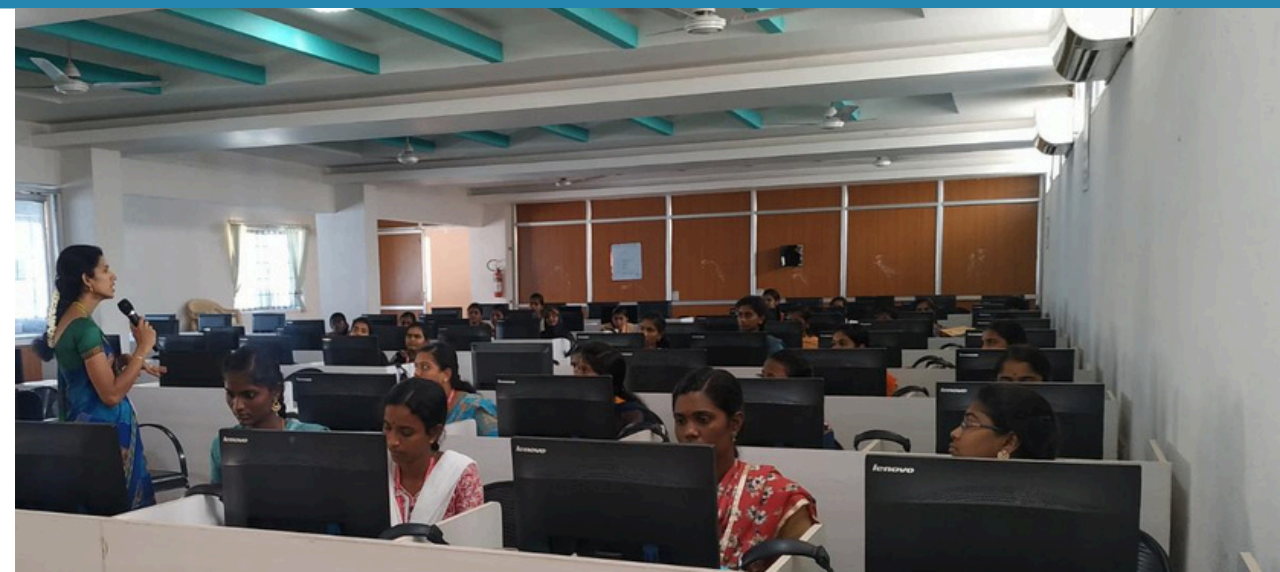
SPSS, MatLab, LaTeX

The learning outcome of SPSS

- understand how to start SPSS
- define a variety of statistical variables
- enter basic data into SPSS
- carry out a statistical analysis that can test hypotheses.

Matlab- The students are able to generate plots and export this for use in reports and presentations and also able to program scripts and functions using the Matlab development environment.

Latex- By learning it makes the students writing simpler, more visually appealing, more consistent, and more reproducible and transparent.



Special Labs

Organic Food Lab

On successful completion of this course, the students will be able to

- Develop critical understanding on various aspects of agronomy.
- Explain the nutrition and application of nutrients to plants.
- Explain the cropping methods and crop rotation.

Realize various weed management practices.



Electronics Lab

By learning in the electronic lab the students are able to identify the operation principles of basic electronic circuit elements and solve the basic diode circuits and identify the commonly used basic diode circuits. They are able to designs basic BJT transistor circuits.



Special Labs

Manam Counselling

Student's personality can be revealed by psychometric testing, including whether they are an extrovert or an introvert, their level of emotional intelligence, and other traits that cannot be discovered from a profile.

It helps in understanding the cognitive abilities, knowledge as well as the personality traits of the students. It helps the students to acquire skills such as seeking for help, rejecting peer pressure and making friends. It also helps the students identify the areas of improvement in their social and life skills.



Language Lab

The students gained a better understanding of nuances of language through audio-visual experience and group activities. Neutralization of accent for intelligibility. Speaking with clarity and confidence thereby enhancing employability skills of the students.



Special Labs

Mobile Servicing

The study focuses on skills that include problem solving, inquiry, experimentation, hypothesizing, researching



Commerce Lab

The students practice their theoretical knowledge gained in the classroom. In addition, students carry on more and more experiments. Mock commerce and business activities are undertaken in laboratory. By this method of learning and practicing, students develop their self-confidence of running a business profitably and understand the practical difficulties. The students are also provided with online trading practice.



Special labs

Jute Bag Preparation

Students learnt how to create unique and attractive designs for Jute bag preparation. They can explore various design elements such as colour schemes, patterns, handles, closures embellishment that enhance the aesthetic appeal of the bags. They also develop their practical skills in cutting, stitching and assembling jute bags. Also gained knowledge on how to work jute fabric and to handle sewing machine or other tools.



SKILL DEVELOPMENT COURSES



Skill development is the productive capabilities acquire through all levels of learning and training occurring in formal and informal ways. Skill courses provide adequate training to improve the core and life skills of the students and to create opportunities, space and scope for their development. It also gains momentum among educators, employers & policy makers as a way to prepare young talents for a successful life. The syllabus for multiple skill programs are framed according to each branch of study. Various assessments are conducted based on their skill courses and the performers will be certified with e-certificate.

Shri Sakthikailassh Women's College was established with the aim to empower girl students by imparting quality and skill based value education. Nearly 70 percent of the students are hailing from rural background. The skill provided by the college enhances their exposure and competence in multidisciplinary ways. The commerce students interact about the significance of Digital Marketing to other department students. Chemistry department students conducted awareness session on the demerits of cosmetics products and insisted the students to use organic beauty products. Likewise all the department students expose the skills acquired by them to other departments.

SSWC provides opportunities to the students to build their capacity and to apply their gained knowledge to real-life situations to be successful in their career.

SKILL DEVELOPMENT COURSES



Life Science Departments

Tissue Culture, Azolla Cultivation, Vermi Compost Preparation, Mushroom Cultivation and Terrace Gardening to grow pesticide-free healthy fruits and vegetables in collaboration with Awe Care & Astanga



Nutrition & Dietetics

Sprouts Health Mix, Jam & Pickle with no added preservative and various Millet Based Cookies



Chemistry

Phenyl Preparation, Organic Soap & Lipsticks and Dyeing.



Physics

Solar Energy and Mobile Service



Textile and Fashion Designing

Terracotta, Attire Display, Bouquet Making



History

Archeology



SKILL DEVELOPMENT COURSES



Computer Science and BCA

Photoshop, Coral Draw and Android App Development



Mathematics

Latex, Mat Lab



Commerce stream

Money Management, Digital Marketing, Computer Application Tools, Retail Management



English

Creative Writing, Linguistic Intelligence



Psychology

Color Therapy, Narrative Therapy and Neuro Linguistic Programme



Tamil

Siddtha Maruthuvam





SSWC

THANK YOU

